

BAROQUE ALPHABET & NUMBERS

Cross Stitch Pattern



E-Patches & Crests

A Division of 1497202 Alberta Ltd.

www.epatches.com

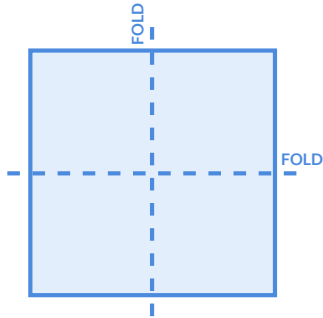
STITCH GUIDE

Supplies You'll Need for Stitching

Embroidery Floss
Small Sharp Scissors
Size 26 Tapestry Needle

HOW TO START:

1 Find the center of your blank circle or square vertically and horizontally by folding in half. Where the two creases meet is the center. You may want to use a single strand of floss to mark these lines with a basting stitch. This is where you'll start your stitching working from the center out.



2 Find the center of the pattern vertically and horizontally. These are marked on the pattern with a red line. You may want to mark this spot with a pencil

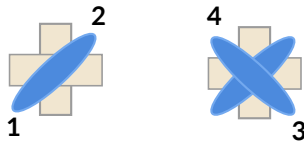
Now that you know where the center of the fabric and the center of the pattern are you can start stitching.

Embroidery floss comes in skeins that will need to be plied down. Cut off a length of thread no longer than the length of your elbow to fingers. This piece of thread contains 6 strands, peel/ply off two strands. Cross stitch is traditionally done with two strands.

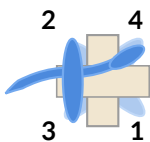
Each symbol on the chart corresponds with a color and equals a single stitch. Starting in the center of the chart and your fabric, make your first stitch.

TO START:

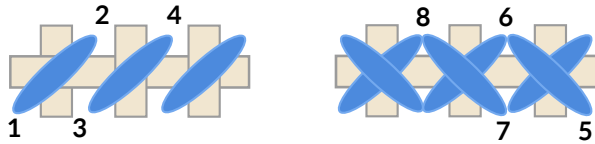
METHOD 1: Ply your embroidery floss down to two strands. Begin by creating a half stitch on the front of your work and hold the thread tail behind your work. Cross the stitch diagonally to create your first full stitch.



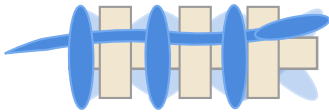
Flip your patch over and pull the tail through the loop. This secures your first stitch!



The main goal of neat cross stitching is to have your stitches all face the same direction, so if you have to make a row or more rows of the same color, you have first to complete a row of half stitches, going up at 1, down at 2, up at 3, down at 4, and so on. Now return making a row of half stitches in the other direction, going up at 5, down at 6, up at 7, down at 8, and so on.

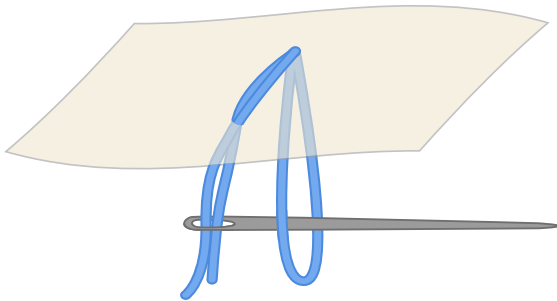


To finish stitching, take your threaded needle and on the back of the work carefully weave through two or three stitches and clip your thread.



METHOD 2: KNOTLESS LOOP START

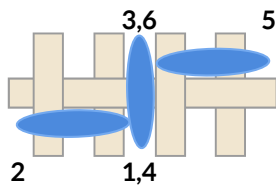
Ply your embroidery floss down to ONE strand and fold it in half. Thread your needle with the two ends. Begin by creating a half stitch on the front of your work and hold the thread loop behind your work.



Flip your patch over and pull the needle through the loop. This secures your first stitch! Cross the stitch diagonally to create your first full stitch.

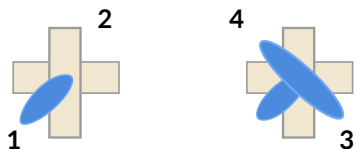
BACK STITCHING

Back stitch is usually indicated on your pattern as a straight line. Backstitching is used for stitching letters and numbers. To create backstitching always use 2 strands.

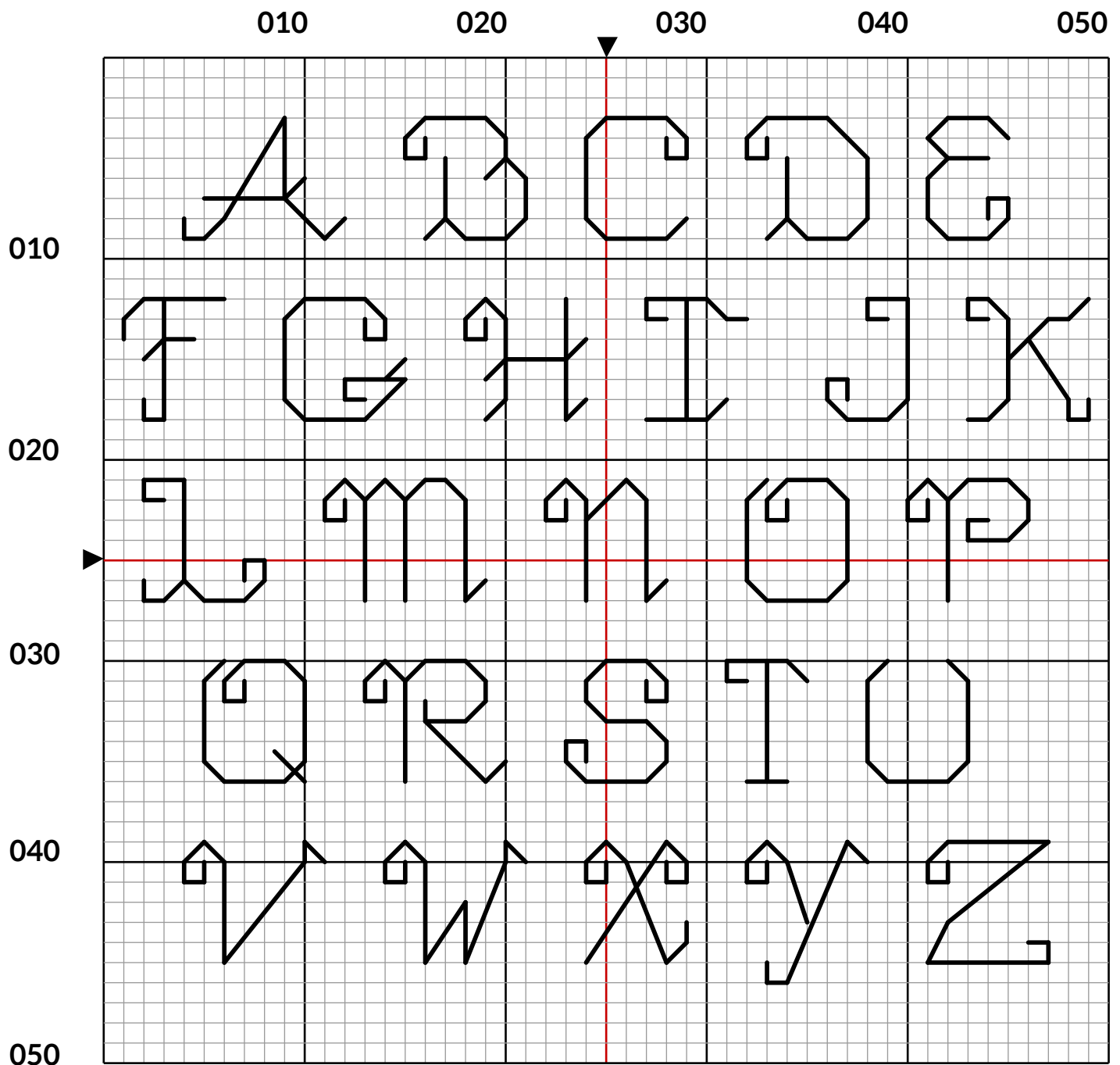


3/4 STITCHING

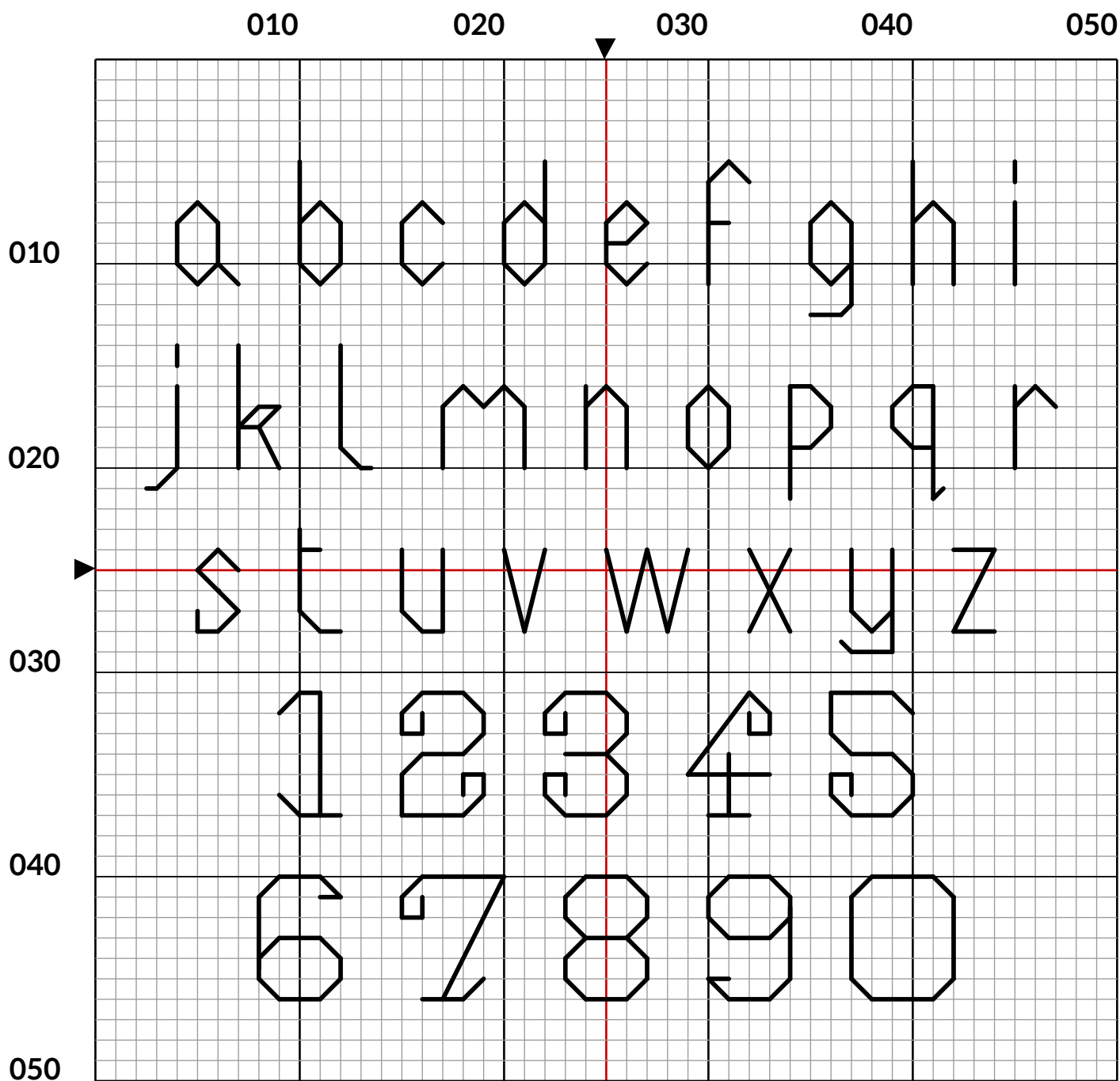
Partial stitches are usually marked in your pattern as half a coloured square or as a little symbol in a corner of the square. To create a 3/4 stitch make a tiny diagonal stitch (1/2 of a normal half stitch) from the corner of the square to the centre of the square. Then make a normal diagonal between the 2 other corners.



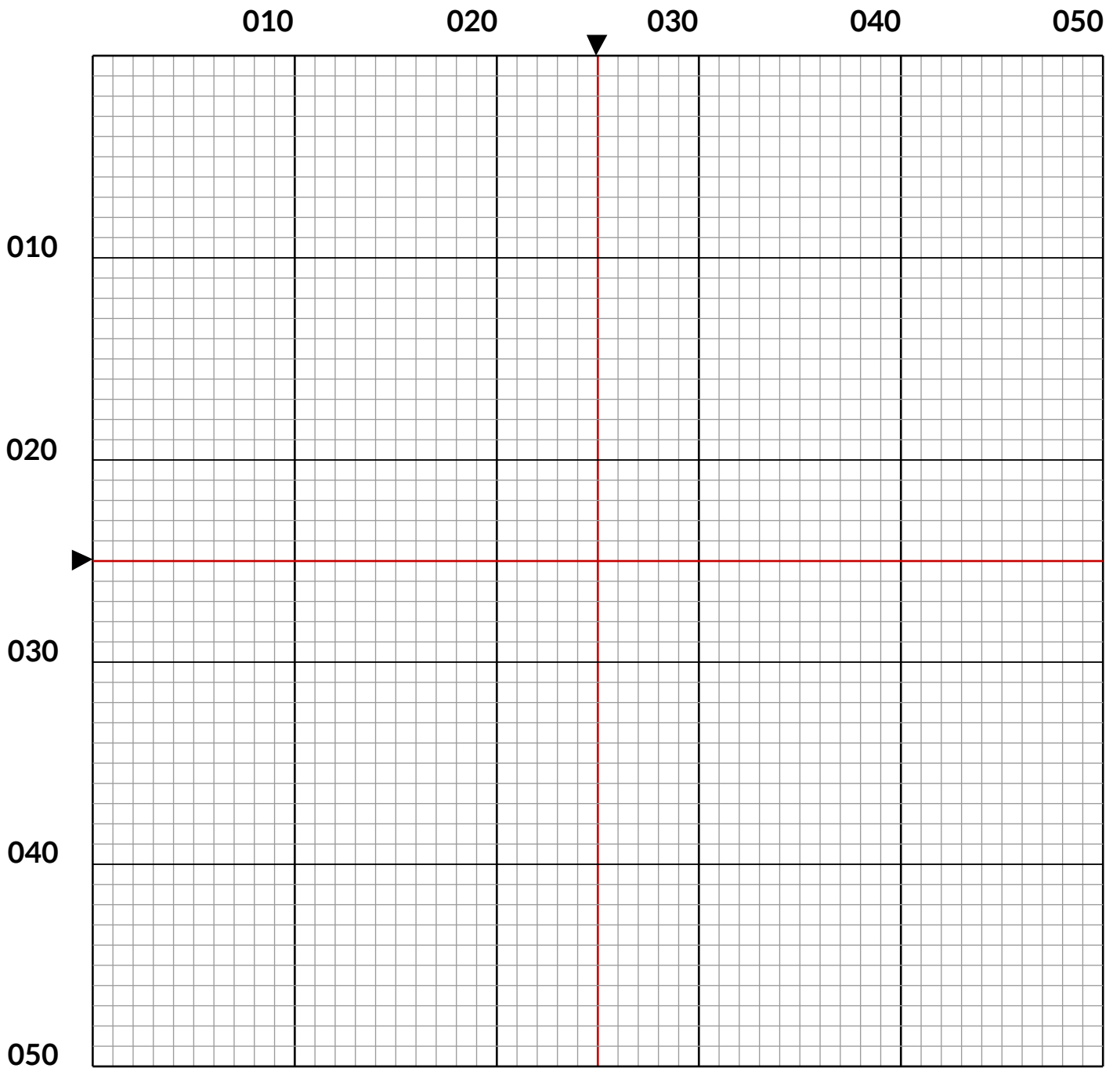
BAROQUE ALPHABET UPPERCASE



BAROQUE ALPHABET LOWERCASE & NUMBERS




BAROQUE ALPHABET PLANNING GRID



THREAD GUIDE

	Number	Name	Strands	Estimated Length
<input type="checkbox"/>	<input checked="" type="checkbox"/> DMC 310	BLACK	2	N/A

Backstitch with 2 strands

DMC 310	
---------	--

*Thank you for purchasing our pattern! We hope you enjoy stitching along with us.
Be sure to email us directly with any questions!*

Happy Stitching!

