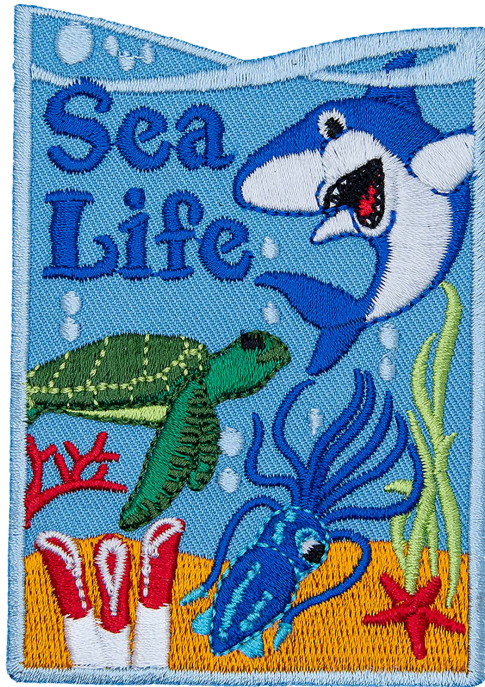


SEA LIFE

CHALLENGE KIT RESOURCES



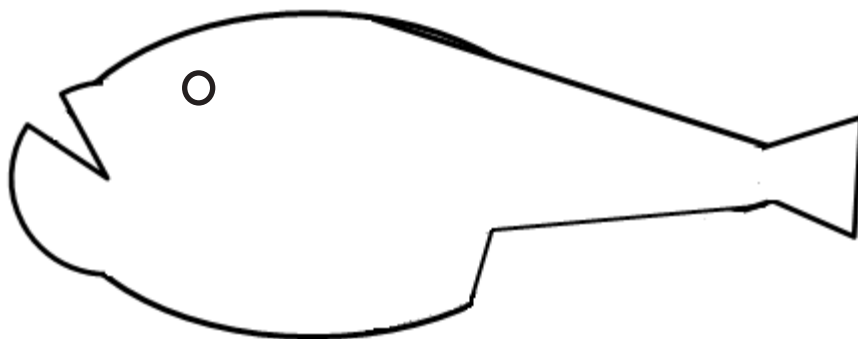
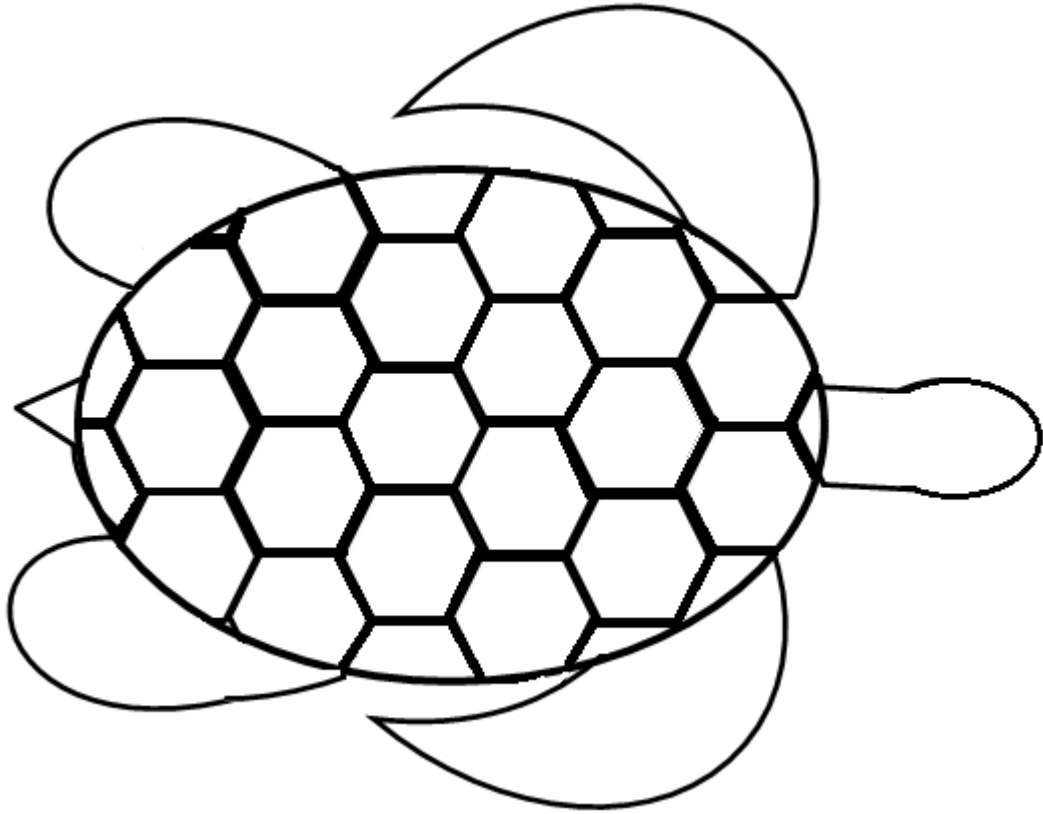
E-Patches & Crests

A Division of 1497202 Alberta Ltd.

©2013 E-Patches & Crests

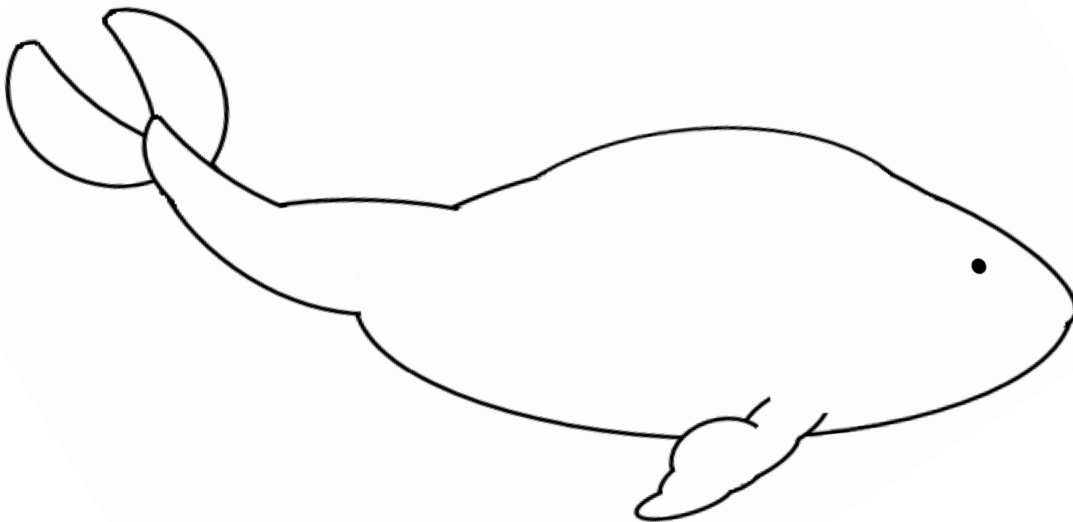
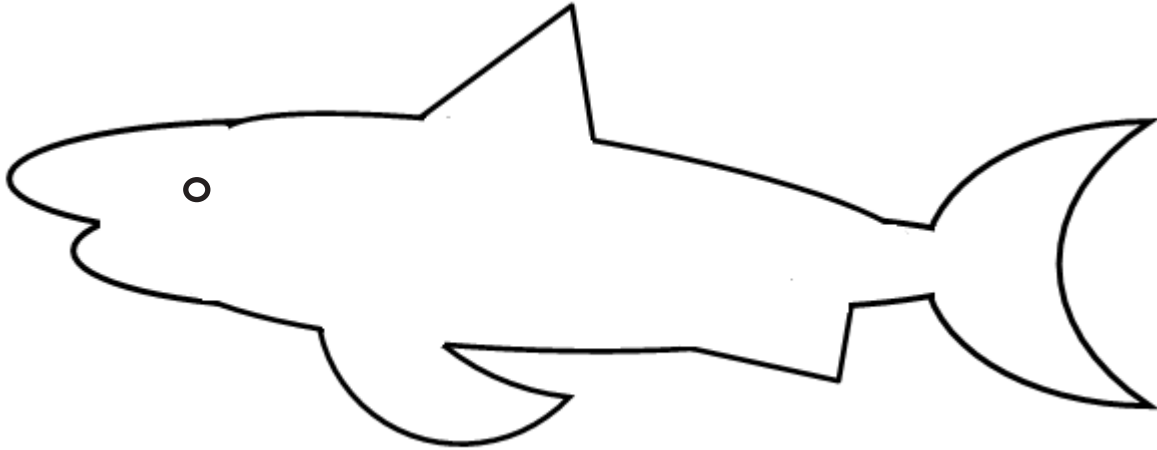
Crafts

Animal Outlines



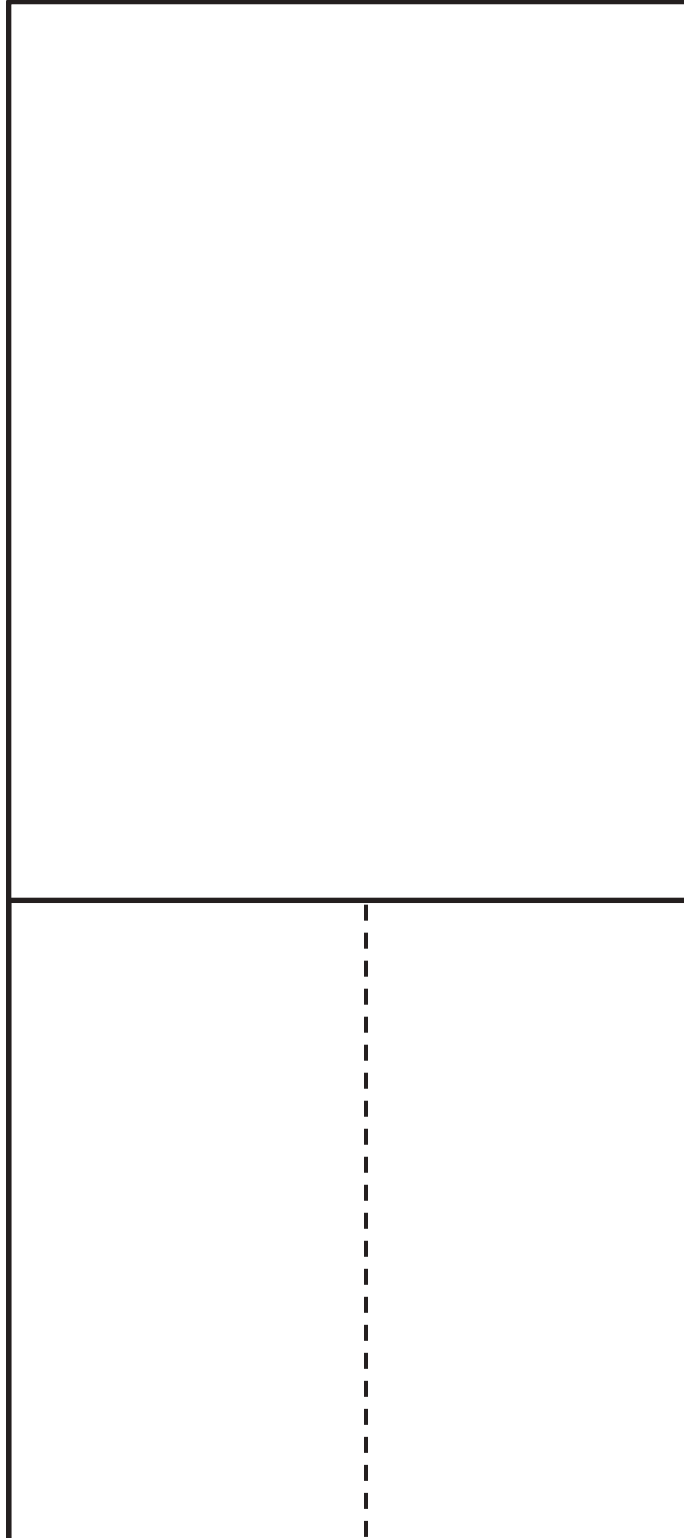
Crafts

Animal Outlines



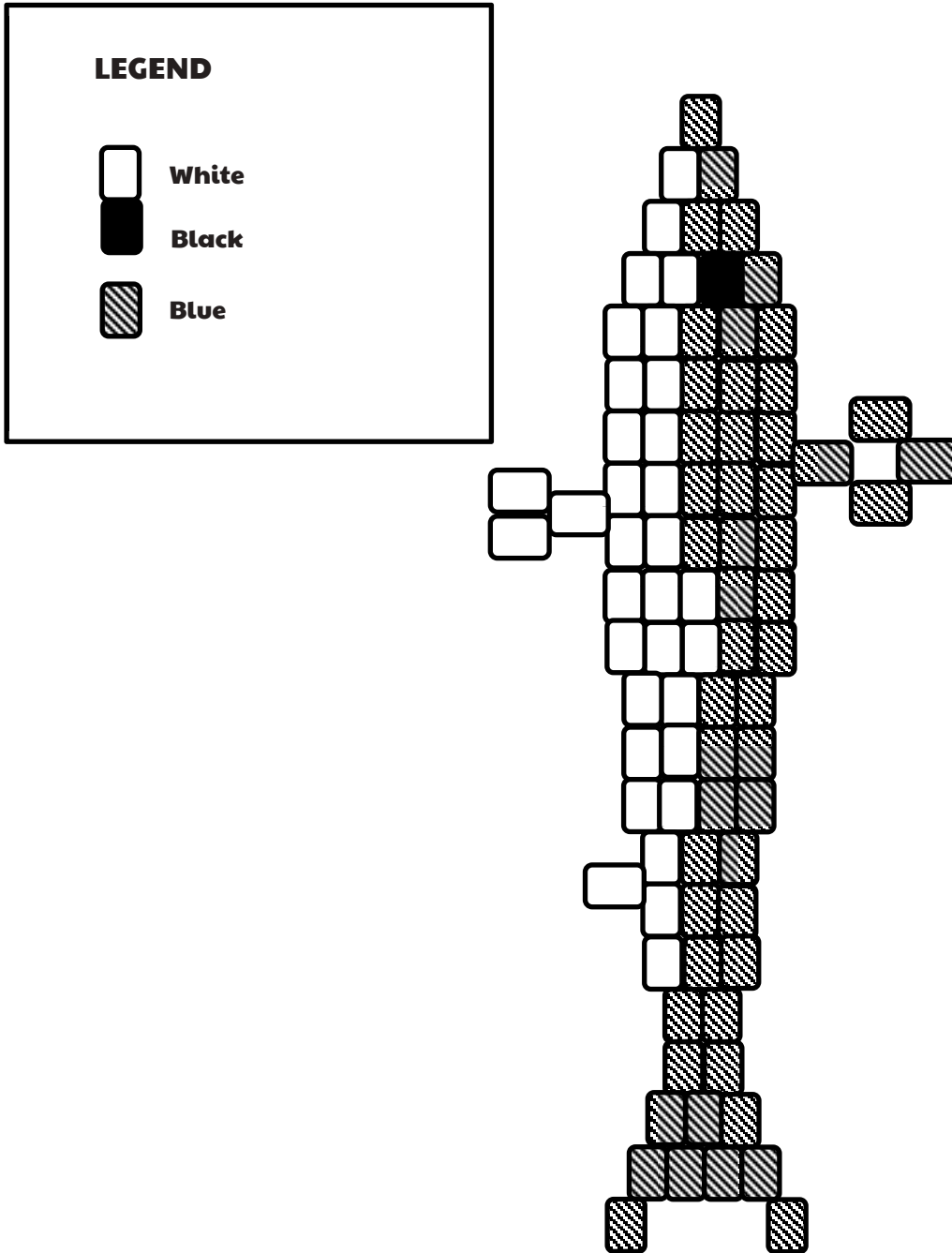
Crafts

Bands Outline



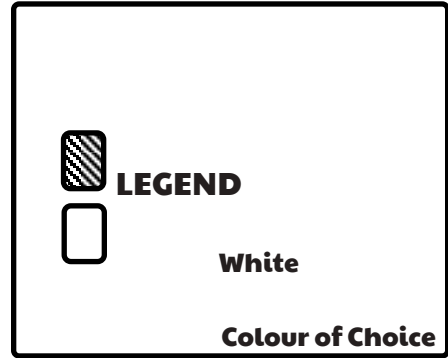
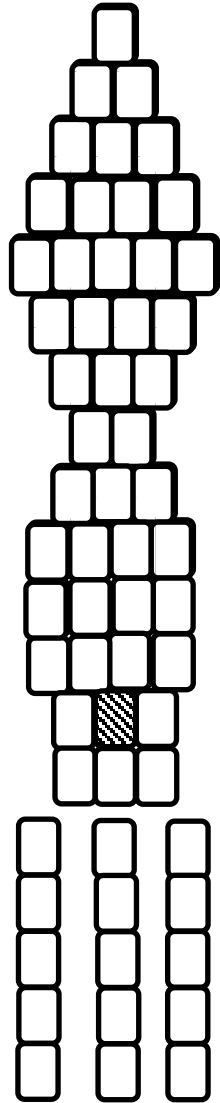
Crafts

Great White Shark



Crafts

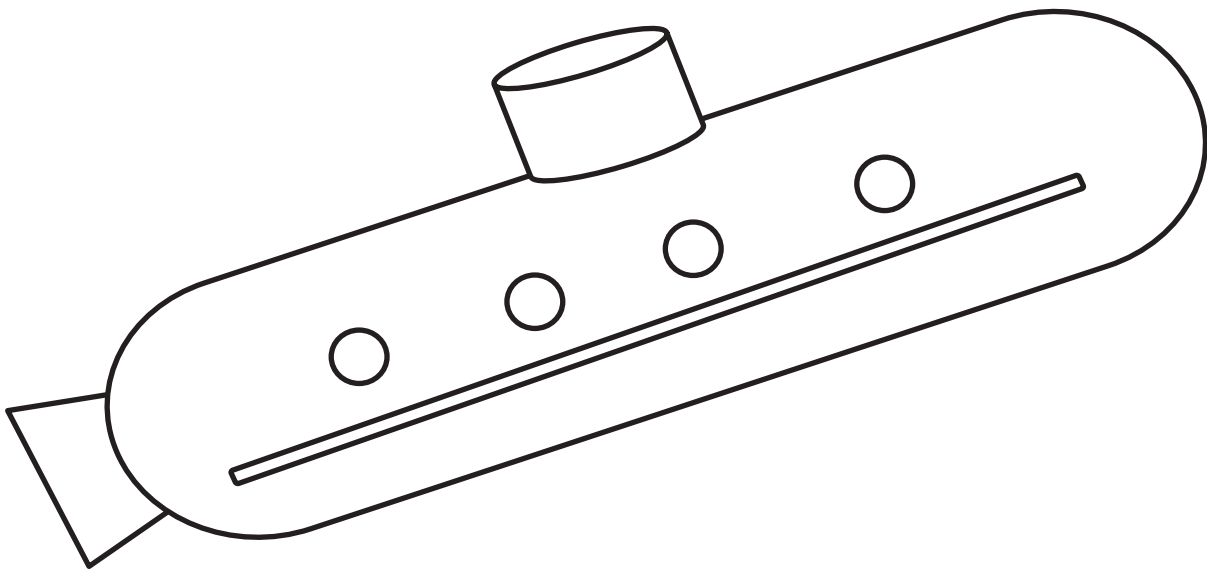
Colossal Squid



Crafts

Submarine Colouring Sheet

You're inside the submarine! What kinds of things do you see?



Games

Marine Mini-Game Cards

Flying fish stay in the air for up to 45 seconds at a time. That means that they hold their breath that entire time.

Who can hold their breath the longest?

PLAYERS: Both team members

EQUIPMENT: stopwatch



Green sea turtles will bury up to 200 eggs in a nest in the sand. Their nests are nearly 2 feet deep.

Bury one cup of loose, uncooked rice in a container of sand 5 centimeters deep.

PLAYERS: One team member

EQUIPMENT: A bag of rice, one large container (recycled ice cream buckets are a good size) filled with 5 centimeters of sand



Games

Marine Mini-Game Cards

Like most other jellyfish, lion's mane jellyfish move using a slow, rapid beat of their bell.

Have a jellyfish race. Sit on the ground, and use only your arms to push you forward.

PLAYERS: Both team members

EQUIPMENT: markers for start and finish lines.



Great white sharks are powerful hunters, thanks to their electromagnetic cells and their strong sense of smell.

Have a blind smell test. Have each player smell an item and write the scent on a piece of paper. Read out all the answers at the end. The team with the most correct answers wins.

PLAYERS: One team member

EQUIPMENT: Blindfold, five household items with identifiable scents (ex, vanilla candles, lavender lotion, rose petals, lemon juice).



Games

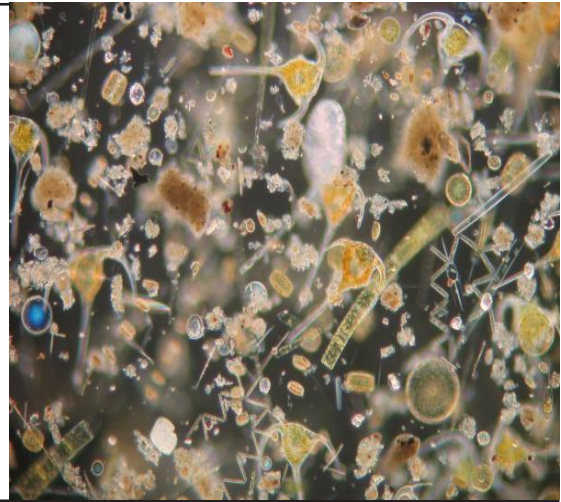
Marine Mini-Game Cards

Plankton is living organisms that are too small to fight the ocean current, including plants and animals. They provide food for many small fish and produce half of the world's oxygen.

Feed the fish door. The first team to blow up six balloons and throw them out the open door wins. Blow up the balloons one at a time. Mark a line near the door that the players cannot cross while throwing.

PLAYERS: Both team members

EQUIPMENT: Balloons



Barrel-eye fish can look through the top of their head when they hunt.

Tie a large lollipop to piece of string. Anchor the string to a table. Have the players lie on the floor beneath the candy and try and catch it with their mouth. First team to catch both wins.

PLAYERS: Both team members

EQUIPMENT: 1 lollipop per player, string, tape.



Games

Marine Mini-Game Cards

Lion's mane jellyfish are the largest creatures on Earth. They can grow to the incredible length of 37 meters long. This puts them ahead of the blue whale, which was previously thought to be largest creature in history.

How long is 37 meters? Measure yourself and see how many of times longer this jellyfish is than each person separately and both together. First team with correct answers wins.

PLAYERS: Both team members

EQUIPMENT: tape measures, calculator (optional)



Wolf Eels are born in the Sunlight Zone, but they move to the Twilight Zone as they mature. When they make their descent, they find a cave which will most likely be their home for the rest of their lives. They have also been known to mate for life.

Strike a pose and hold it. How long can you go without moving? Have a leader stand watch. The last player in the same position they started in wins!

PLAYERS: Both team members

EQUIPMENT: Stopwatch



Games

Marine Mini-Game Cards

Firefly squid get their name from the bioluminescent cells that run along their tiny bodies. They glow so bright, people flock to Japan to see where millions gather and light up the ocean.

What other things glow without a power source like electricity? Name as many as you can in one minute.

PLAYERS: Both team members

EQUIPMENT: paper and a pen for each group



Blobfish are arguably the laziest fish in the ocean. They are known for their lack of muscle tone, which gives them a sagging look. They are also known for spending most of their time suspended

Have the group form a large circle. In the middle place an object (anything hand-held). Players have to grab it, but they can only move when the leader's eyes are closed. The team of the first player to get the object wins.

PLAYERS: Both team members

EQUIPMENT: None



Games

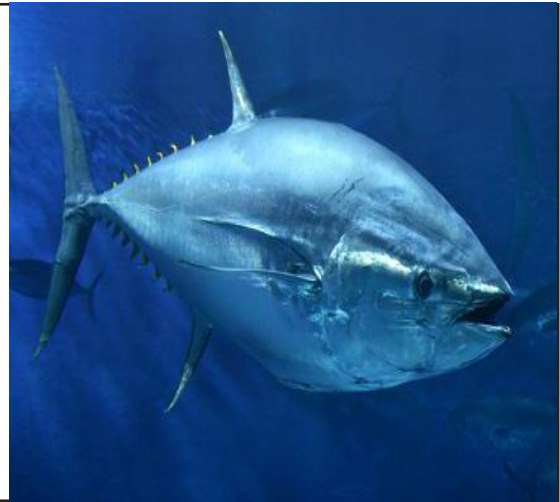
Marine Mini-Game Cards

Bluefin tuna are incredibly fast fish. With a top speed of 64 km/h, they are the fastest of all eight tuna species. They're also the largest, with an average weight of 990 pounds!

Have a time trial foot race around your meeting space to see who the fast runner is. Have each person run separately to avoid accidents.

PLAYERS: Both team members

EQUIPMENT: Stopwatch, pen and paper to record



At a maximum length of 14 meters, colossal squid really live up to their name—nearly three times the height of the average giraffe. But they don't eat much: 30 grams of food—about two slices of deli meat—is enough each day.

Play a game of tag with a twist. Have a leader begin the game. Each tagged player joins hands with the person who is it (or the last person at the end of the line) to help tag all the players. The team of the last free player wins.

PLAYERS: Both team member

EQUIPMENT: None



Games

Marine Mini-Game Cards

Just like their name suggests, the Antarctic toothfish lives in the Antarctic Ocean 2,000 meters below the surface. The waters there are cold; so cold that the fish has developed natural antifreeze to prevent it from freezing to death!

Give each player an ice cube. The first team to melt both ice cubes wins.

PLAYERS: Both team members

EQUIPMENT: Ice cubes, towels for clean up

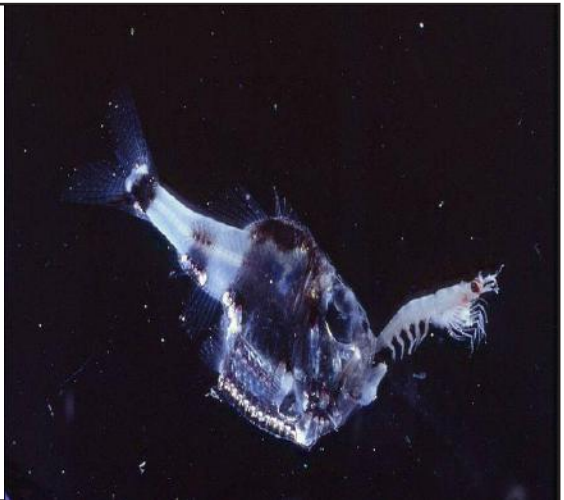


When they hunt, marine hatchetfish scan the waters above their head for the silhouettes of other fish against the weak light from the surface. Because of this, they have developed eyes that face upward.

One team member will toss goldfish crackers into the air for the other team mate to catch with her mouth. First team to catch ten wins.

PLAYERS: both team members

EQUIPMENT: Goldfish crackers



Games

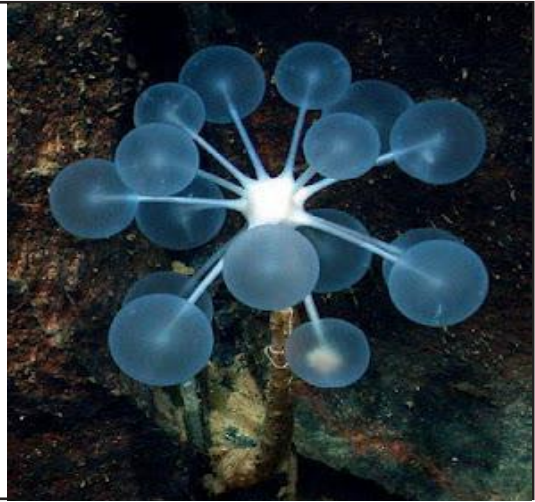
Marine Mini-Game Cards

Ping pong sponge trees are deep sea sponges. They don't have digestive, nervous, or circulatory systems. It gathers food by filtering sea water through its pores.

Each team will create a sea creature based on a piece of sports equipment. Draw a picture, give it a name, and introduce it to the group. Have a vote to see who has the most inventive creature. Each person will get a vote, but no one can vote for their own picture.

PLAYERS: Both team members

EQUIPMENT: Pen and paper



Viperfish have impressive teeth. Their teeth are so long that if they didn't curl behind their head, they would not be able to close their mouths.

Have one person move four fish from a paper plate to a container six feet away using only their mouth. First team to move all four wins.

PLAYERS: One team member

EQUIPMENT: 4 cut out of paper fish (attached)



Games

Marine Mini-Game Cards

Black swallows live very deep in the ocean. Since they rarely come across food, they gobble as much as they can when they find it. They can consume a fish several times larger than themselves; their stomachs swell up like balloons to three times its normal size.

How many balloons can one team member blow up in 90 seconds?

PLAYERS: One team member

EQUIPMENT: Stopwatch, balloons



Female anglerfish have a bioluminescent lure on top of their heads. They move it back and forth like a fishing rod to attract prey. Males hunt by attaching themselves to a female. Once a male has attached himself to a female, he becomes part of her for the rest of her life.

Have an anglerfish foot race. One team player will run while the other team mate is wrapped around one of their legs

PLAYERS: Both team members

EQUIPMENT: None



Games

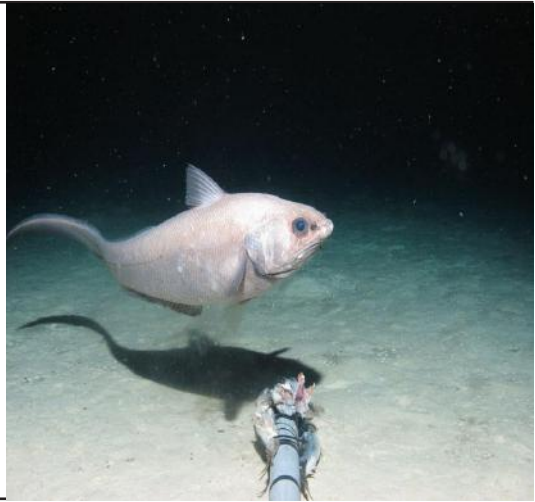
Marine Mini-Game Cards

Rattail fish are the most plentiful fish at the bottom of the sea. They are attracted to shipwrecks and hydrothermal vents. They are curious fish, often investigating the equipment from the surface.

Players will move from one far of the room to the Sea Canal as a leader toggles music on and off. Players not touching a structure (chair, table) when the music stops are out. The first player to reach the goal or the last player wins.

PLAYERS: Both team members

EQUIPMENT: Music (radio will be fine)



Giant tube worms don't have mouths or digestive systems. They survive thanks to a bacterial that lives inside of them. They gather food through their plumes (red tips) for the bacteria and the bacteria release chemicals that feed the worms.

Have both team members throw a ball back and forth between them. A leader should clap their hands when players should throw. Speed up the tempo for a challenge. Last team to drop their ball wins.

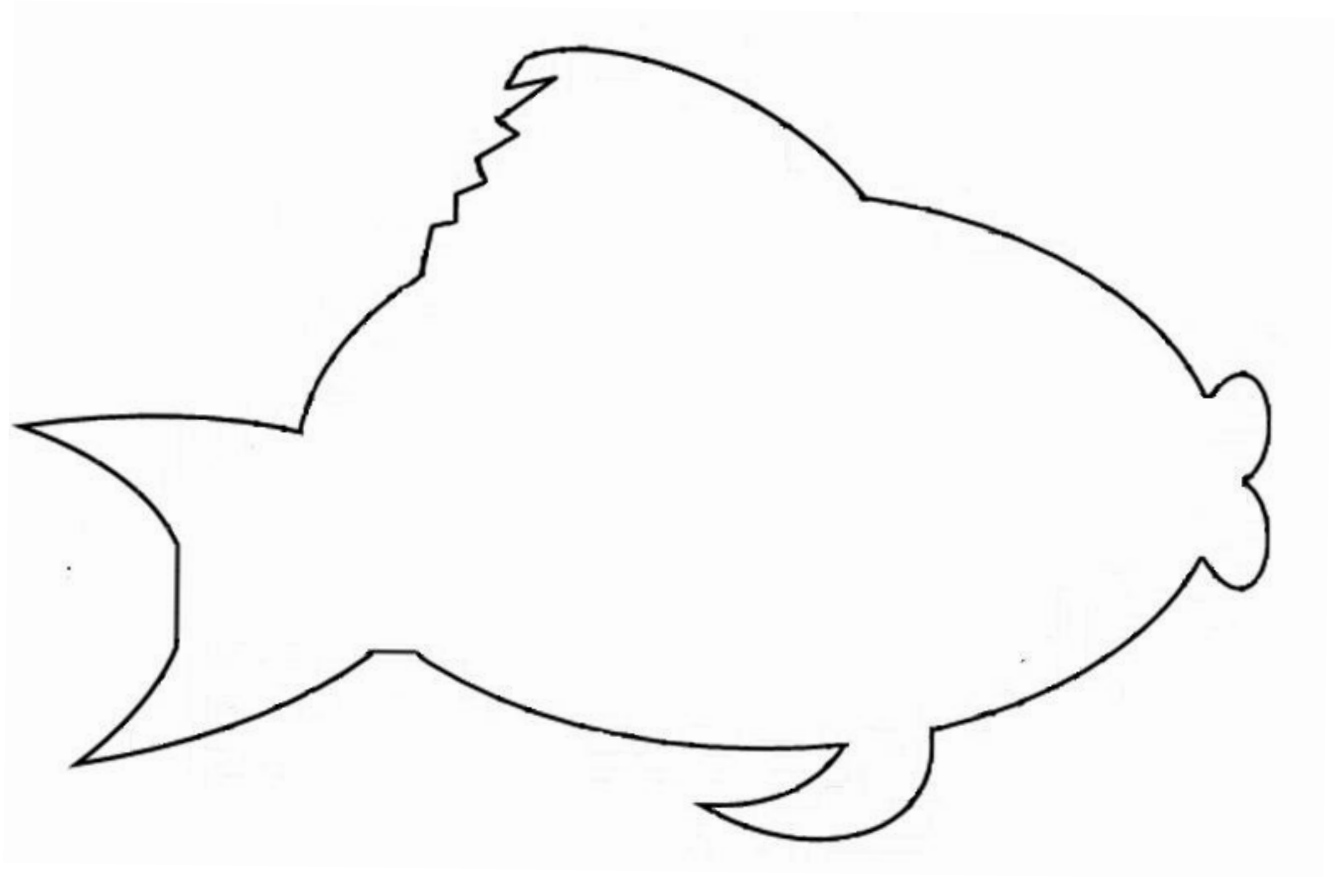
PLAYERS: Both team members

EQUIPMENT: 1 small ball per team



Games

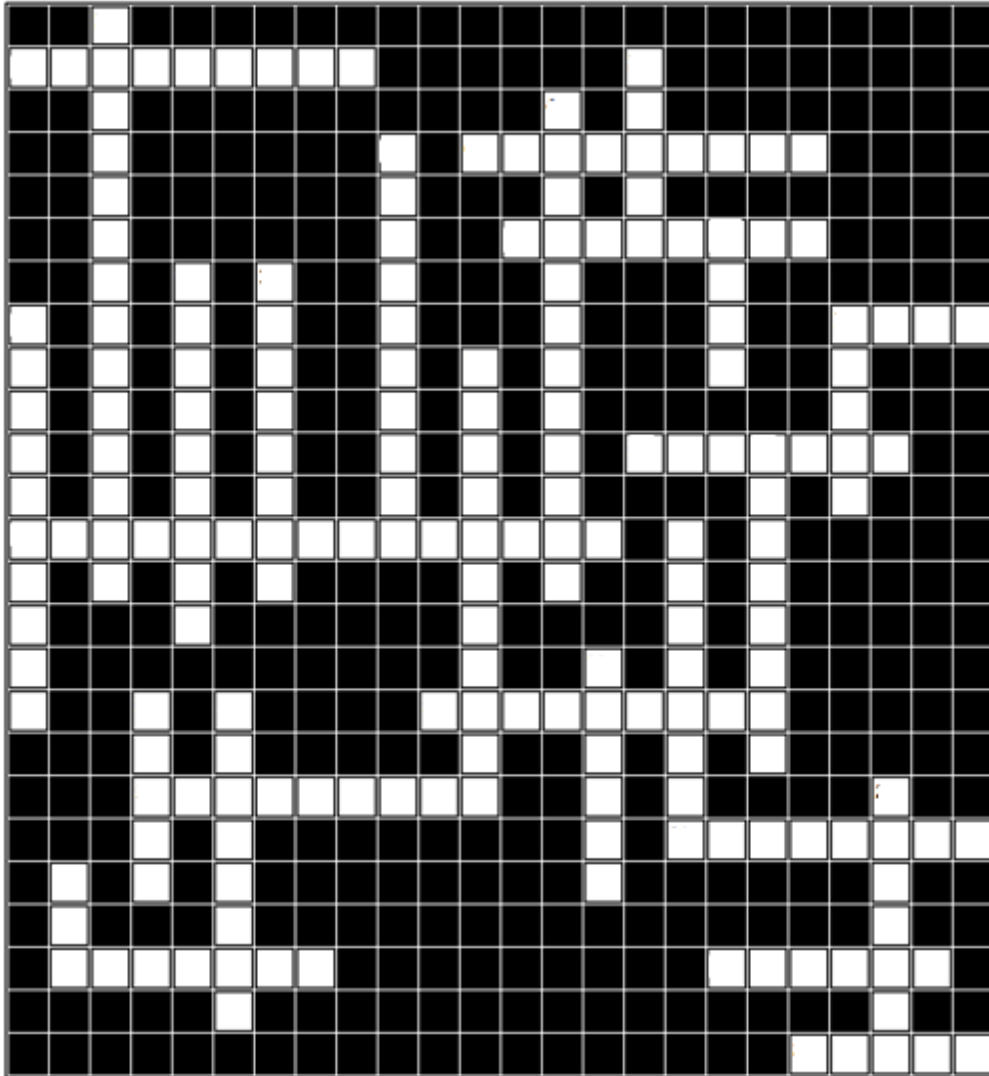
Fishing Hole



Puzzles

Sea Life Crossword

Fit the keywords, listed below, into the crossword. The words are listed in according to the number of letters they have. Use those clues to help you fit all of the words into the puzzle.



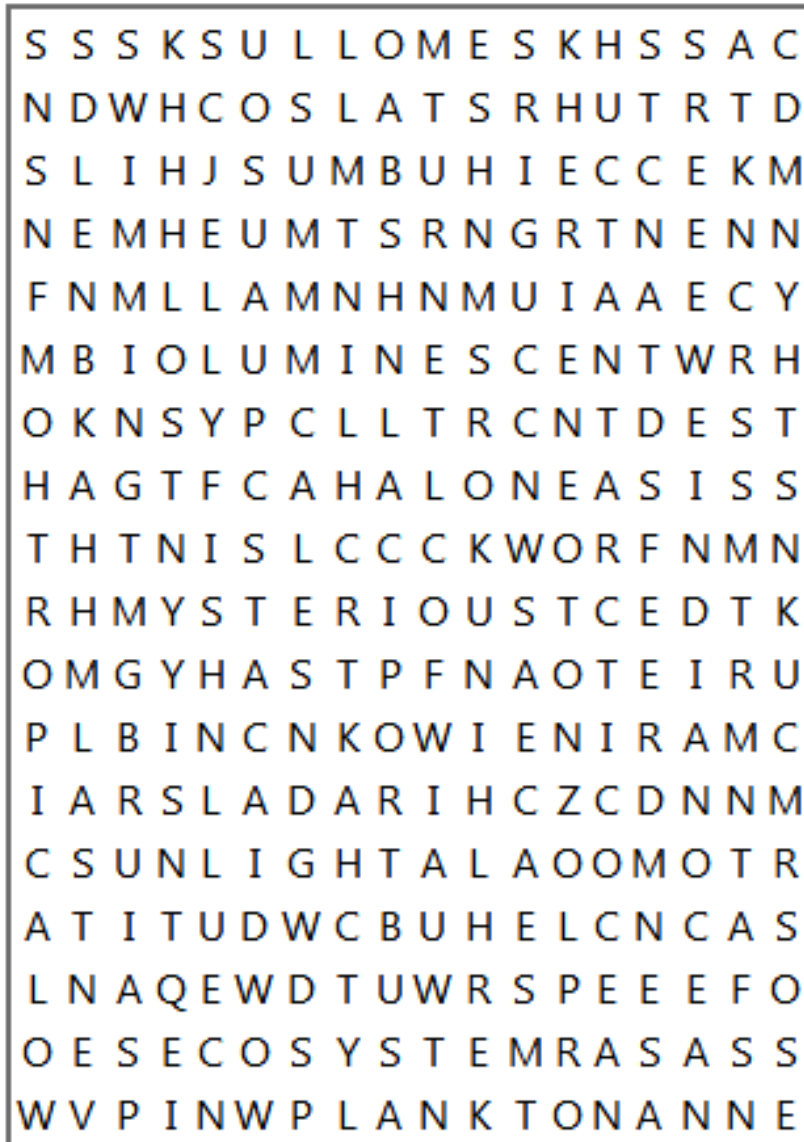
KEYWORDS

- | | | | | |
|-------|-------------|------------|-------------|-------------------|
| SEA | WATERANGLER | RATTAIL | JELLYFISH | HATCHETFISH |
| TUNA | TRENCH | SUNLIGHT | SEA TURTLE | FRILLED SHARK |
| SWIM | ABYSSAL | TUBEWORM | VIPERFISH | BLACK SWALLOWER |
| OCEAN | BLOBFISH | TWILIGHT | FLYING FISH | GREAT WHITE SHARK |
| SALTY | MIDNIGHT | WOLF EEL | SPONGE TREE | |
| SQUID | PLANKTON | BARREL EYE | TOOTHFISH | |

Puzzles

Searching the Ocean

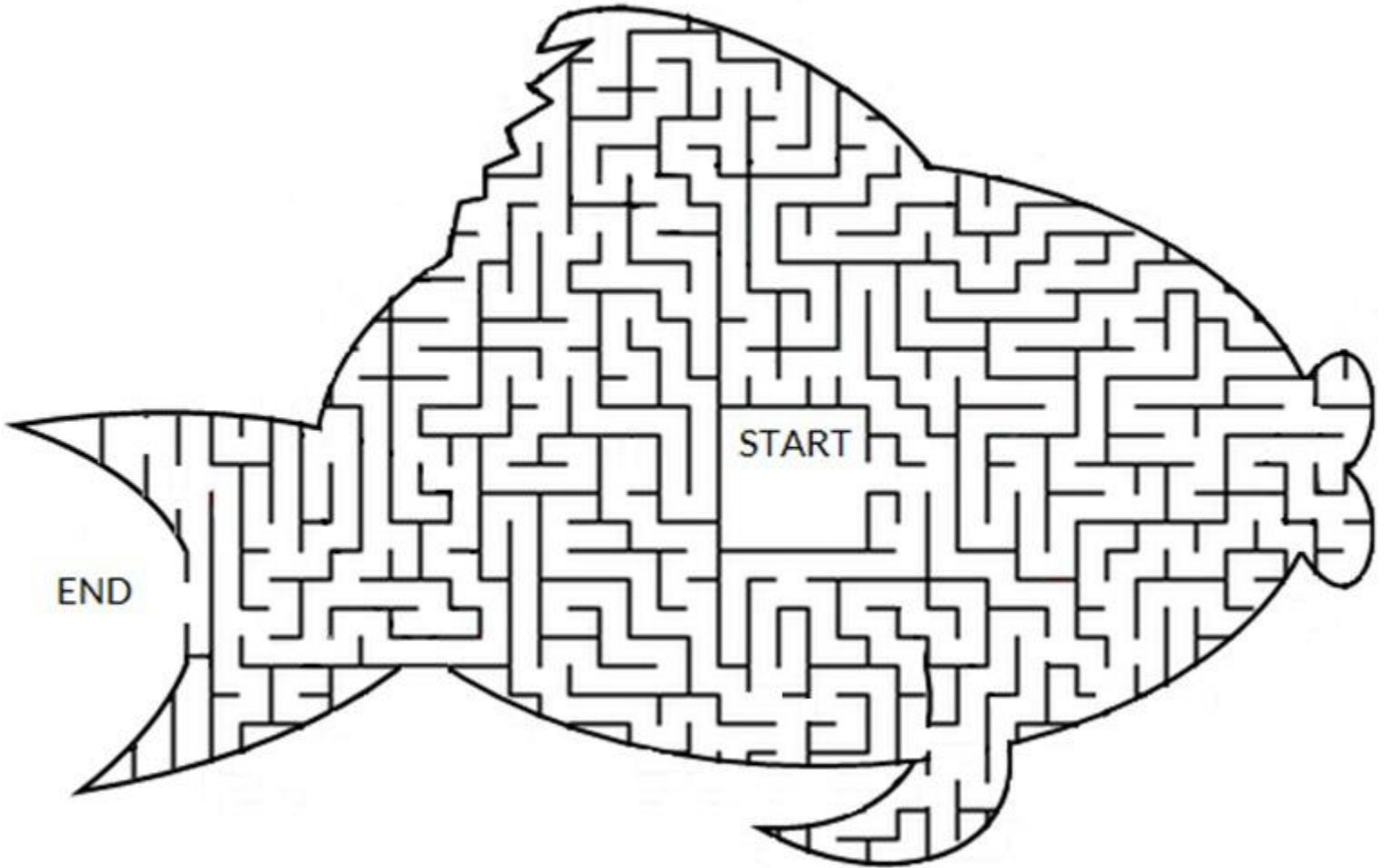
All of the words listed on this page can be found in the word jumble below.
Can you find all of them?



Abyssal Antarctic
Ocean Arctic
Atlantic Ocean
Bioluminescent
Crustaceans Dark
Deep Ecosystem
Fish
Indian Ocean
Jellyfish Mammals
Marine Midnight
Mollusks
Mysterious Pacific
Ocean Plankton
Reefs
Sea
Sharks Southern
Ocean Squid
Subtropical
Sunlight Swimming
Trench Tropical
Twilight
Vents
Water
Wet
Whales
Zones

Puzzles

Fish Escape Maze



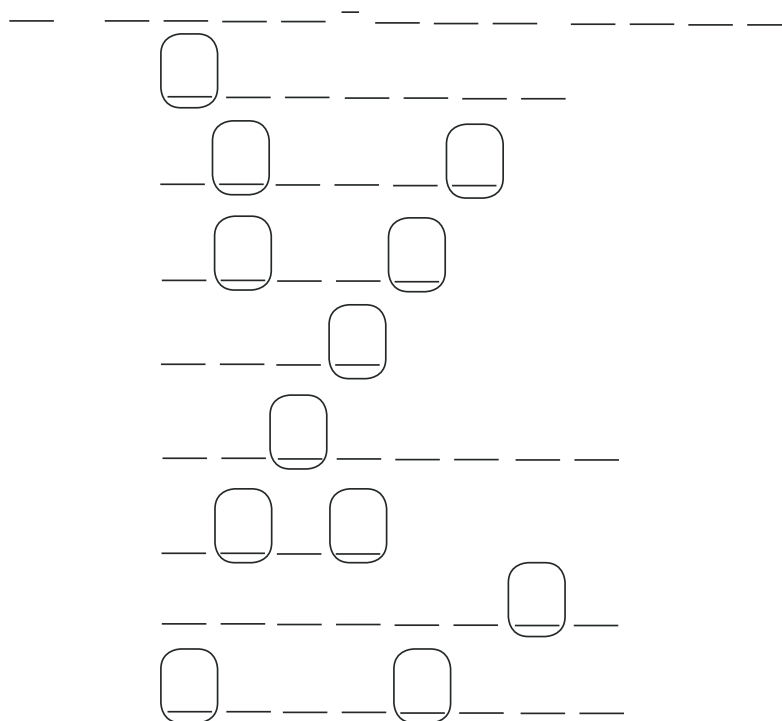
Puzzles

Zone Scramble

The questions below ask about the different zones of the ocean and other amazing ocean areas. Answer the questions and use the letters in the bubbles to unscramble the answer to the riddle.

Use the clues at the bottom of the page to fill in the blanks of the words below. All of the questions ask about the different layers or zone in the ocean and other amazing ocean areas. Use the letters in the bubbles to unscramble the answer to the riddle.

WHAT IS A MERMAID?



1 Which zone sits right above the bottom of the ocean?

2 This zone is the deep grooves that cut into the ocean floor.

3 Boiling water from beneath the sea floor floods out of these structures.

Hydrothermal _____

4 The HMS Challenger, the boat that launched modern oceanography, inspired this name for the ocean's deepest point.

The Challenger _____

5 What is the third zone of the ocean?

6 This coral structure on the coast of Australia is so large it can be seen from space. Hundreds of creatures call it home. The Great Barrier _____

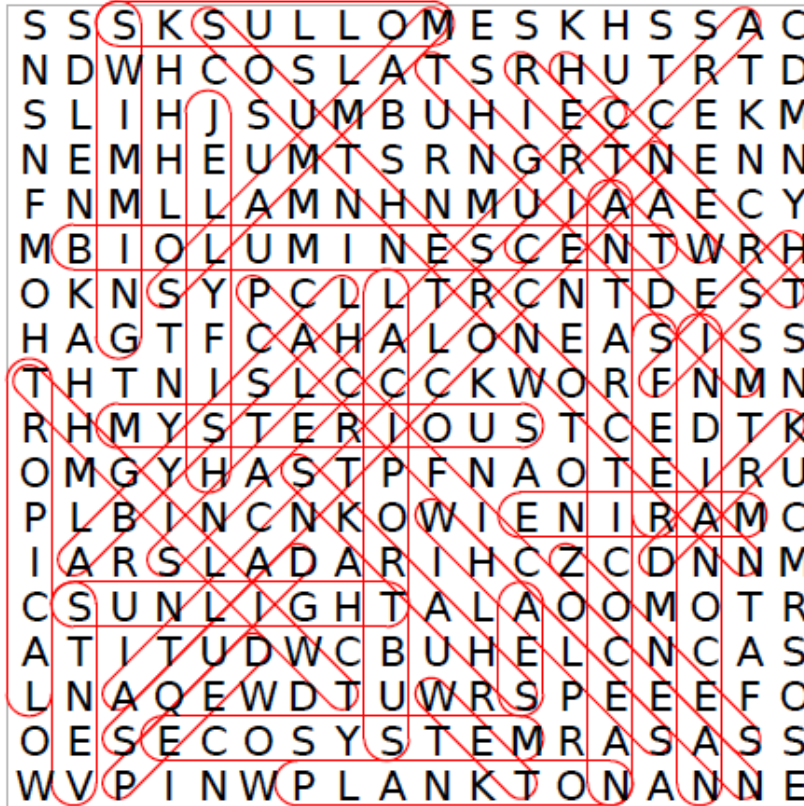
7 This zone was named after what little, distorted sunlight it receives.

8 This is the first and the most populated zone of the ocean.

Puzzles

Searching the Ocean Answer Key

All of the words listed on this page can be found in the word jumble below. Can you find all of them?



- Abyssal
- Antarctic Ocean
- Arctic
- Atlantic Ocean
- Bioluminescent
- Crustaceans
- Dark
- Deep
- Ecosystem
- Fish
- Indian Ocean
- Jellyfish
- Mammals
- Marine
- Midnight
- Mollusks
- Mysterious
- Pacific Ocean
- Plankton
- Reefs
- Sea
- Sharks
- Southern Ocean
- Squid
- Subtropical
- Sunlight
- Swimming
- Trench
- Tropical
- Twilight
- Vents
- Water
- Wet
- Whales
- Zones

Puzzles

Fish Escape Maze Answer Key

